

Go to www.worldbookonline.com

1. Click on **Early World of Learning** | 2. Click on **Know It** | 3. Click on **Creepy Crawlies** | 4. Click on **Water Insects**



Water Insects

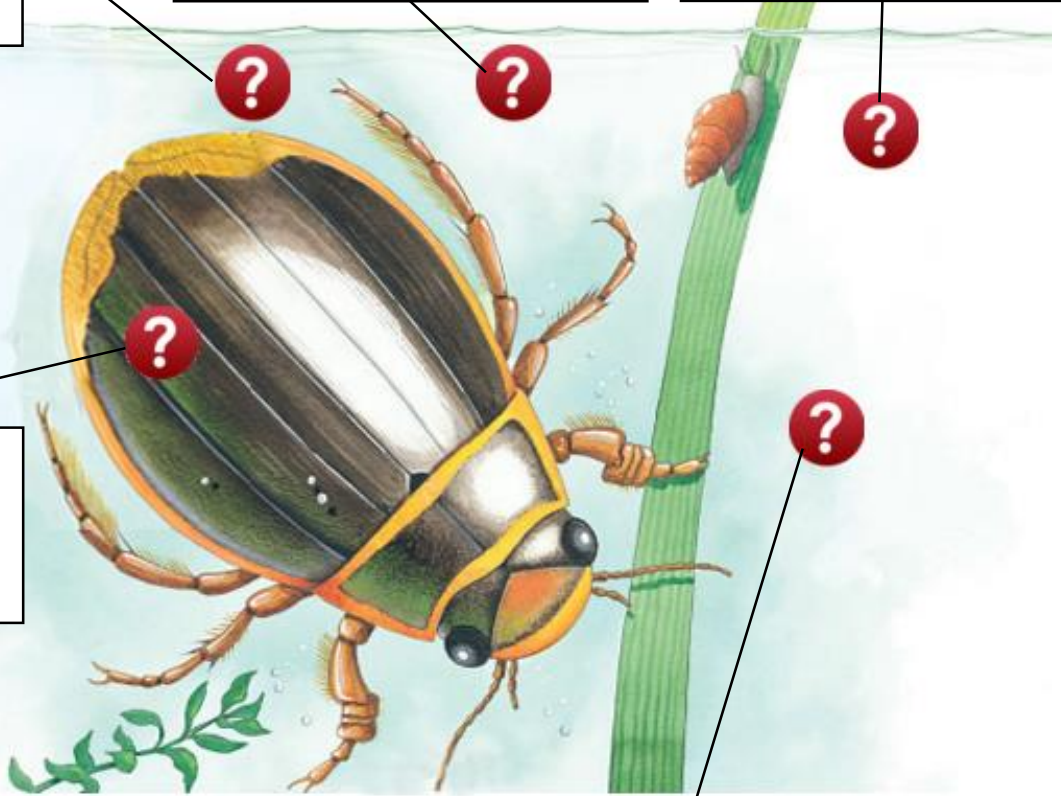
Many insects live in or near _____, where food is plentiful and there are many places to hide from enemies. Here, a large diving beetle is plunging deep into the water to look for _____. It carries a bubble of _____ under its wing cases so it can breathe.

A large _____ beetle can measure up to 4 centimetres long.

The beetle's hairy back legs are shaped like _____. The beetle uses them to swim through the water.

A pond _____ makes a tasty snack for the diving beetle.

A flattened body helps the beetle _____ quickly.



Hooks at the end of the _____ are useful for clinging to slippery underwater plants.